

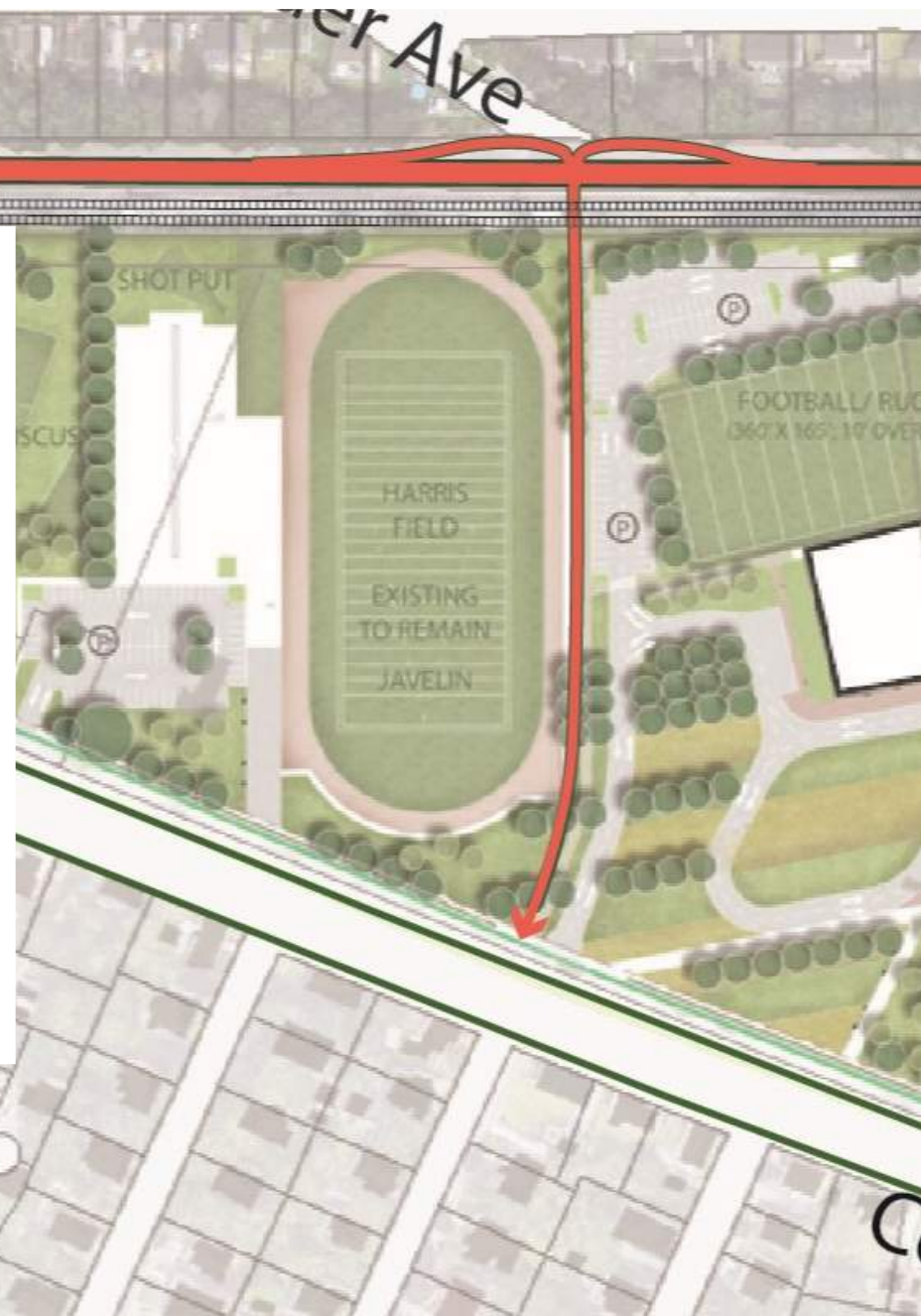


# Belmont Community Path – Phase 1

## *Design Public Hearing*

Beech Street Center | March 07, 2024 | 7:00 PM

Project File No. 609204



## Welcome & Meeting Overview

- In-person and recorded to be posted online at a future date
- 30-minute presentation
  - John Michalak, PE, ENV SP, Nitsch Engineering
- Questions and Comments
  - Tom Currier, Project Manager, MassDOT
  - John Michalak, Project Manager, Nitsch Engineering

This hearing is being recorded and will be made available at  
[www.mass.gov/orgs/highway-division/events](http://www.mass.gov/orgs/highway-division/events)

## Notice of MassDOT's Policy on Diversity and Civil Rights

- All MassDOT activities, including public meetings, are free of discrimination.
- MassDOT complies with all federal and state civil rights requirements preventing discrimination based on sex, race, color, ancestry, national origin (limited English proficiency), religion, creed, gender, sexual orientation, gender identity or expression, or veteran's status.
- We welcome the diversity from across our entire service area. If you have any questions or concerns, please visit <https://www.mass.gov/nondiscrimination-in-transportation-program> to reach the Office of Diversity and Civil Rights.

All questions and comments are welcome and appreciated, however we do request that you refrain from any disrespectful comments.

# Hearing Agenda

- 01 Welcome & Opening Remarks
- 02 Project Overview
- 03 Project Initiation
- 04 Project Goals
- 05 Proposed Design
- 06 Right of Way
- 07 Project Impacts
- 08 Next Steps
- 09 Questions & Feedback



## Presentation Participants

- **MassDOT Project Manager**
  - Thomas H. Currier
- **MassDOT ROW Agent**
  - Nikki Peters
- **Nitsch Engineering Project Manager**
  - John Michalak, PE, ENV SP

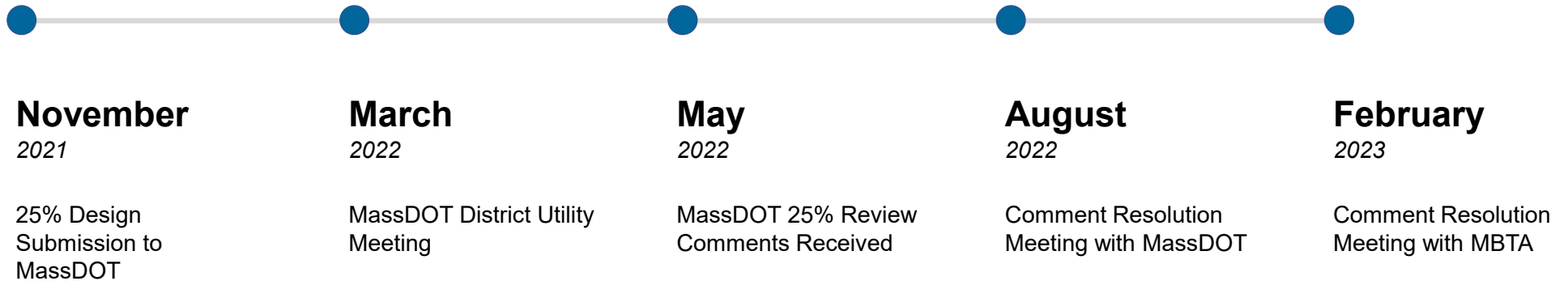
## Recent Public Outreach

- Channing Road Site Walk
  - November 16, 2019
- Public Information Meeting #1
  - July 16, 2020
- Public Information Meeting #2
  - November 4, 2021
- Belmont Historic District Commission Meeting
  - March 8, 2022
- 25% Design Public Hearing
  - March 7, 2024

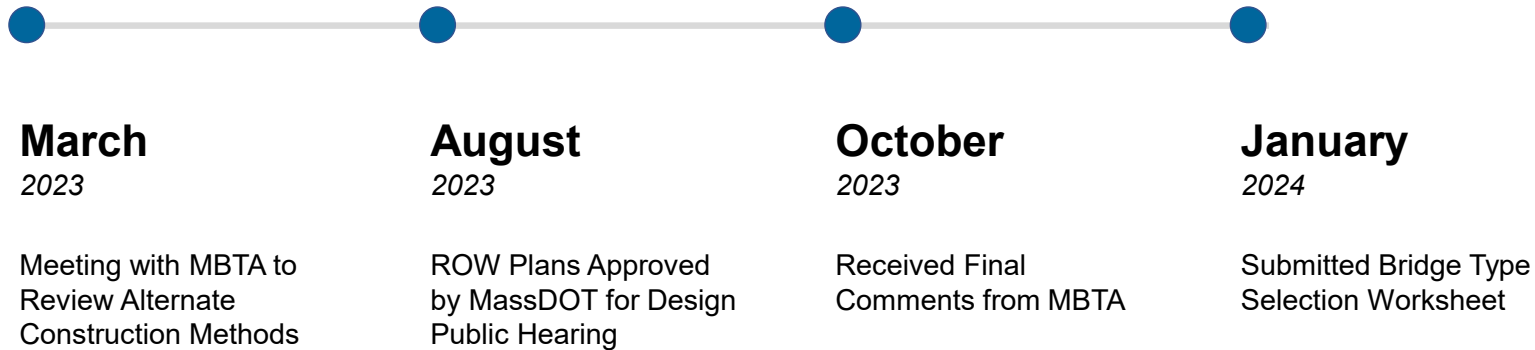




## How Did We Get Here?



## How Did We Get Here?







**Why was this  
project  
initiated?**

## Project Initiation

- Complete connectivity of the Mass Central Rail Trail (MCRT)
- Part of 104-mile bike path (MCRT)
- Provides access to Waltham and Cambridge neighborhoods
- Alexander Avenue Underpass will provide safe access to Belmont High & Middle Schools
- Phase I approved and eligible for Transportation Improvement Program (TIP) funding
- Massachusetts Department of Transportation (MassDOT) will oversee the design and construction of the project (MassDOT Project Number 609204)





**What do we  
want to  
accomplish?**

## Project Goals

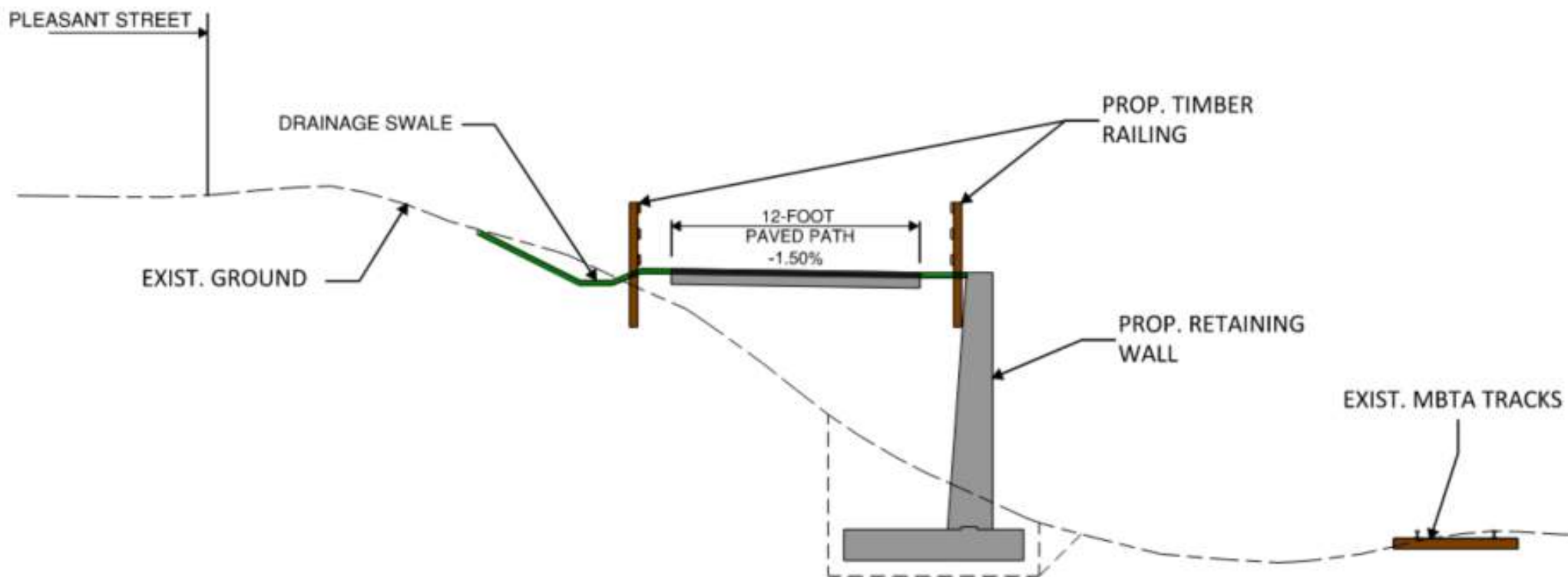
- Improve bicycle and pedestrian safety
- Provide a safe connection from Channing Road and neighborhoods north of the railroad tracks to Belmont High & Middle Schools
- Minimize environmental impacts
- Minimize impacts to Commuter Rail service during construction
- Create an accessible shared-use path linking neighborhoods and town center
- Connect the shared-use path to the MCRT





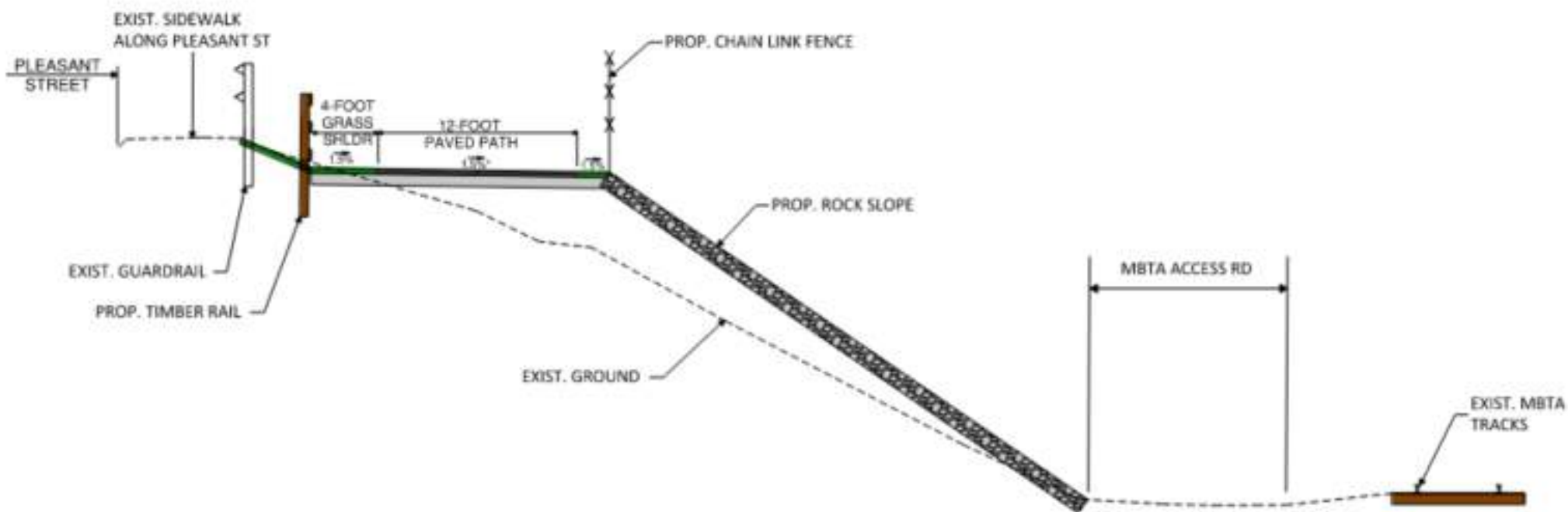
**What  
alternatives  
were  
considered?**

## Alternatives Considered: Pleasant Street



12-FOOT PATH WITH RETAINING WALL

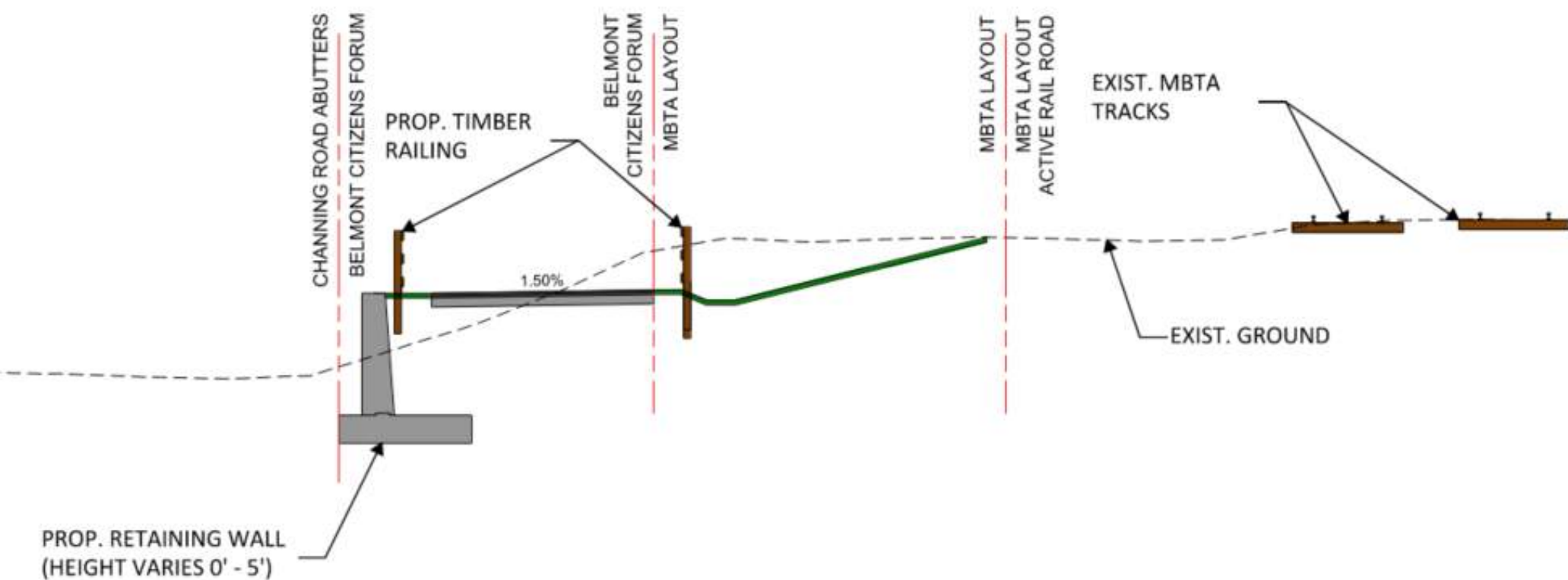
## Alternatives Considered: Pleasant Street



12-FOOT PATH WITH ROCK SLOPE

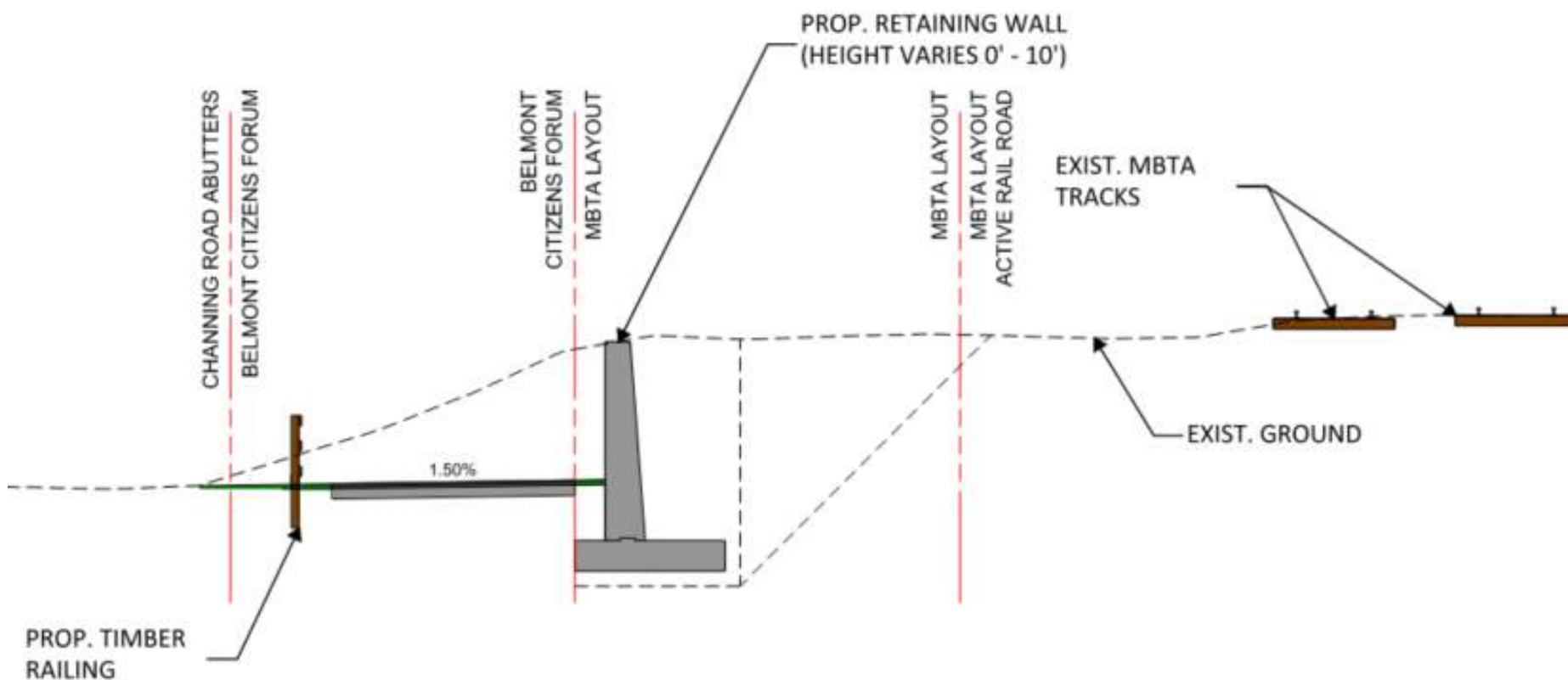


## Alternatives Considered: Channing Road



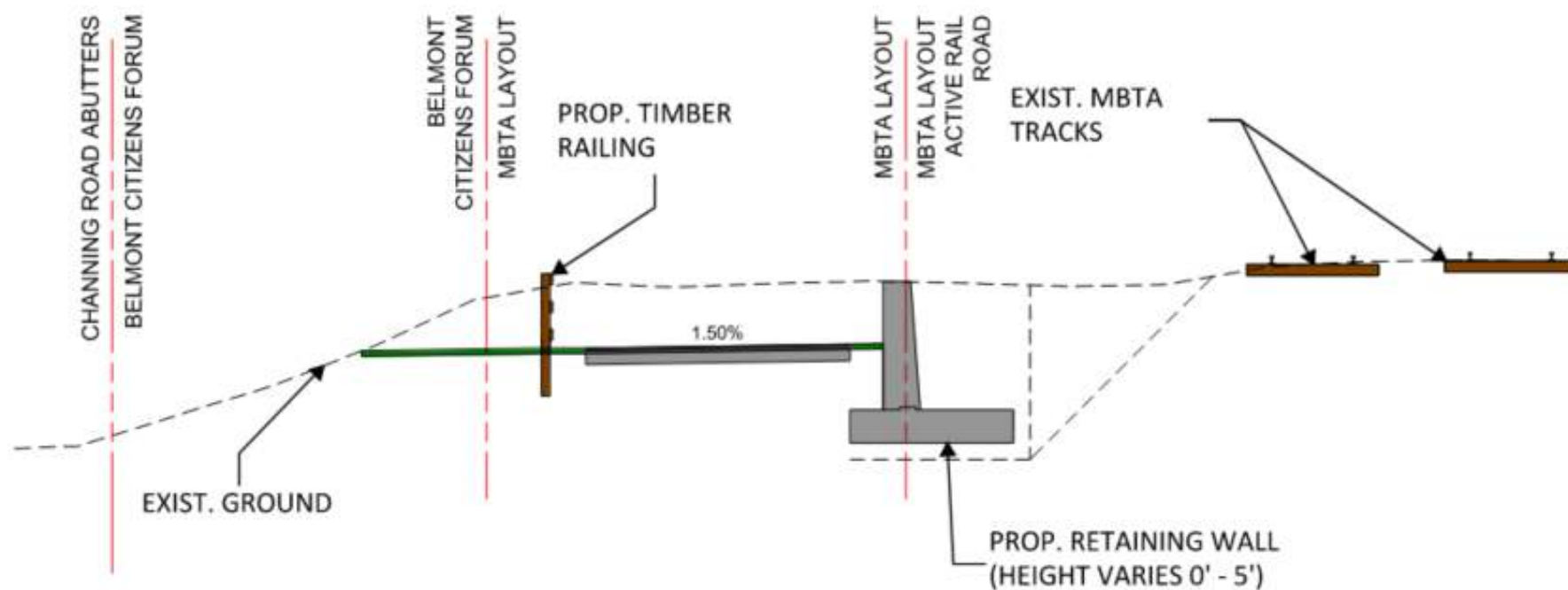
ALTERNATIVE 1

## Alternatives Considered: Channing Road



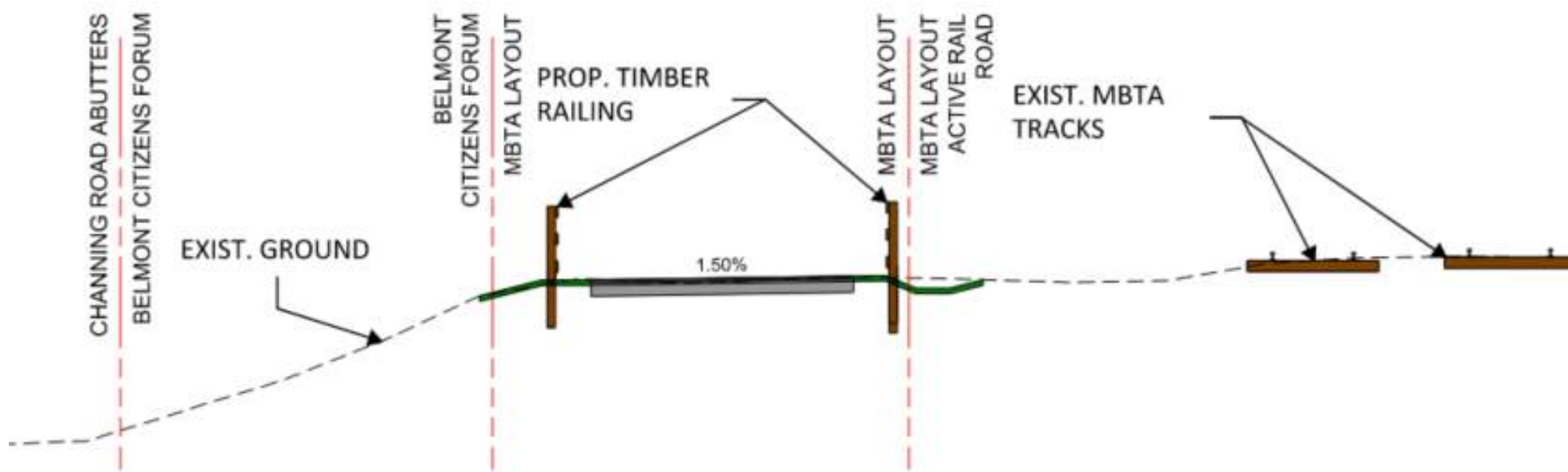
ALTERNATIVE 2

## Alternatives Considered: Channing Road



ALTERNATIVE 3

## Alternatives Considered: Channing Road



ALTERNATIVE 4

## Alternatives Considered: Concord Avenue at Belmont Station



CONCORD AVENUE CROSSING AT PATH ENTRANCE





This aerial map illustrates the proposed MBTA Fitchburg Line extension through Belmont. The map features several key elements:

- PROPOSED JACKING PIT 18'X24'**: A red dashed rectangular area located near the top center of the map, adjacent to the proposed line.
- PROPOSED UNDERPASS**: A black rectangular area located in the center of the map, indicating the proposed underpass structure.
- PROPOSED JACKING PIT 18'X36'**: A red dashed rectangular area located near the bottom center of the map, adjacent to the proposed line.
- MBTA FITCHBURG LINE**: A label pointing to the existing MBTA Fitchburg Line tracks on the right side of the map.
- BELMONT MIDDLE AND HIGH SCHOOL**: A label pointing to the school building located at the bottom right of the map.

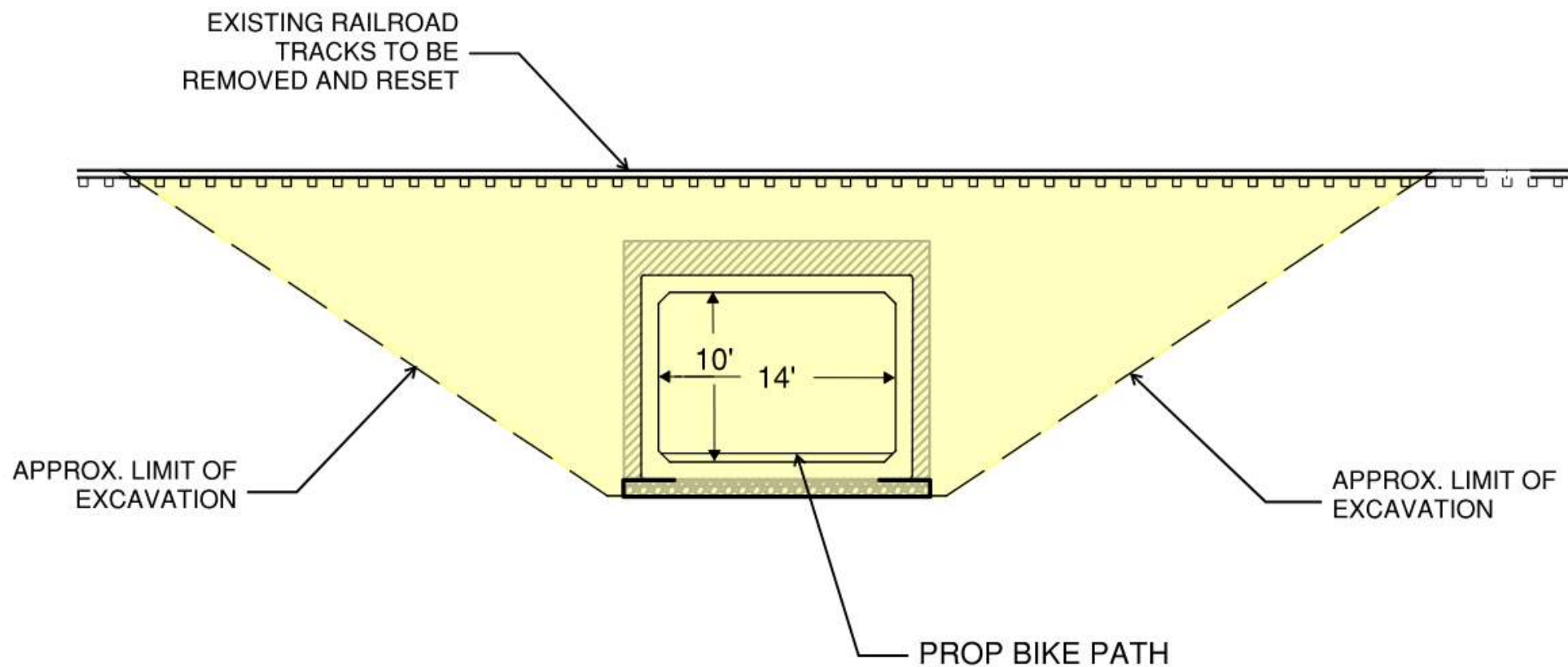
The map also shows various other features, including existing roads, utility lines, and the proposed alignment of the new line. The proposed line is shown as a solid black line, while existing lines are shown as dashed lines. The map includes a north arrow in the top right corner.

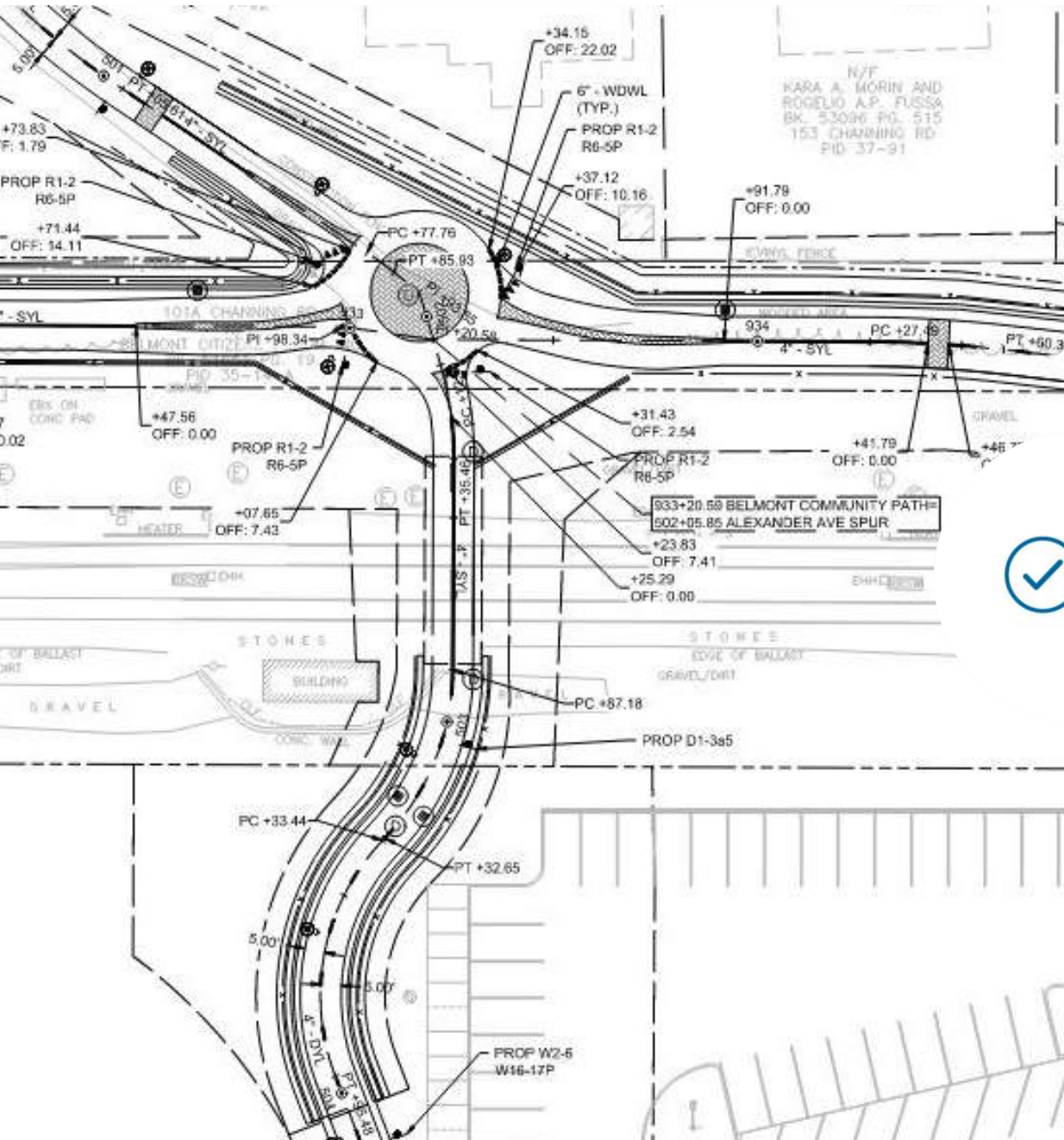




## Preferred Alternative

### Cut and Cover





What is the preferred alternative?

## Cut and Cover (Preferred)

- Commuter rail will only be out of service for 4-days
- Install in sections
- Less costly than tunnel jacking
- Expedited installation
- Support utilities in place
- Stockpile materials prior to excavation





## Preferred Alternative



**MCRT Tunnel Crossing  
Weston, MA**

## Preferred Alternative



**Narrow Gauge Link  
East Boston, MA**



**Fitchburg Cut-off Trail  
Belmont, Cambridge, and Somerville, MA**





**How will your  
property be  
impacted?**

## Preliminary Right of Way (ROW) Discussion 25% Design Public Hearing

- The Town of Belmont is responsible for acquiring all necessary rights in public land for design, construction, and implementation of this project.
  - Fee takings, permanent easements and/or temporary construction easements may be required.
- Affected property owners will be contacted by personnel from the Town of Belmont.
  - Property owners are protected under Massachusetts General Laws, primarily Chapter 79.
- Preliminary ROW drawings will be available at <https://belmontcommunitypath.com> for public review and comment.

**At this stage of design, the Right of Way process has not been finalized. This meeting is an opportunity for the public to comment on any impacts to properties.**





**How will  
bicyclists and  
pedestrians  
be impacted?**

## Impact to Pedestrians and Bicyclists

- During Construction
  - Existing facilities will remain open and protected from construction work zones
  - Temporary Police Details will be utilized as required near construction
- After Construction
  - Improved bicycle and pedestrian safety
  - Safer connection from Channing Road to Belmont High & Middle Schools
  - Shared-use path access from Pleasant Street, Concord Ave, Channing Road & Brighton Street
  - Connection to existing Fitchburg Cutoff Bike Path which extends to the Alewife MBTA station







**What are the  
environmental,  
cultural  
resource, and  
community  
impacts?**

## Environmental Analysis

- Request for Determination of Applicability (RDA)
  - Submit to Belmont Conservation at 75% Design to confirm no construction impacts to wetlands
  - Required for work near wetlands or within wetlands buffer zone
  - Existing wetlands on south side of tracks near Belmont Station
- Stormwater Report
  - Prepared in compliance with Department of Environmental Protection (DEP)
  - Submitted for review with 25% Submission





**What is the  
construction  
approach?**



## Underpass Construction



## Path Construction



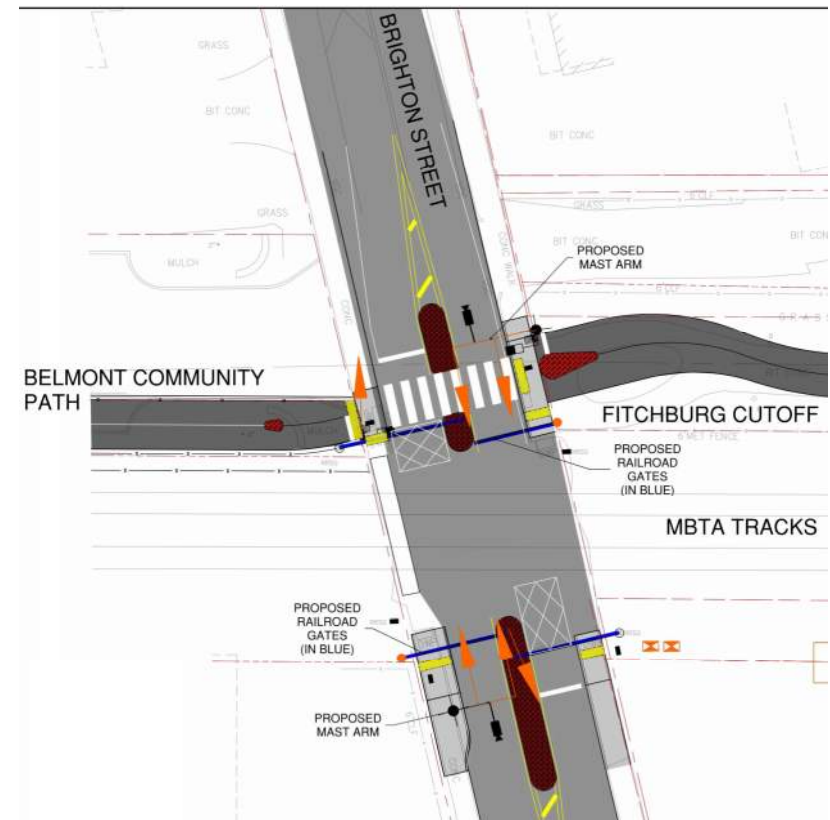




**How will the  
road user be  
affected?**

## Impacts to Motorists

- Temporary traffic impacts at path access points
  - Pleasant Street
  - Concord Ave
  - Channing Road
  - Brighton Street
- Access to Alexander Avenue from Channing Road will be obstructed during underpass construction
- New traffic signal at Brighton Street / Community Path / Railroad crossing



## Our Next Steps



25% Design Public  
Hearing  
Winter/Spring 2024



75% Design  
Submission  
Summer 2024



100% Design  
Submission  
Fall 2024



PS&E Submission  
Winter/Spring 2025



Advertise for  
Construction  
Spring 2026



**How will we  
keep you  
informed?**



# Opportunities To Engage Today and In The Future

- There are several means to provide feedback *today and throughout the design phase*:
- View plans and provide comments on the project website:  
[www.belmontcommunitypath.com](http://www.belmontcommunitypath.com)
- The design team will also be available to schedule in-person or virtual meetings with individuals or groups to review the design and answer questions

## Project Updates

### 25% Submission – Public Information Meeting

Posted on November 3, 2021 by John Michalak

On Thursday, November 4th, 2021 at 7:00PM the Community Path Project Committee (CPPC) will be hosting a virtual meeting where the Nitsch Team will present the 25% Submission Plans that were submitted to MassDOT earlier this week. During the meeting attendees will be provided an opportunity to provide comments and ask questions about the preliminary design of the Belmont Community Path. A link for you to download a copy of the 25% design plans is provided below. Following the meeting, we will provide a copy of the presentation from the public meeting and a link to provide additional comments and ask questions on this website. We look forward to seeing you at the public meeting on the 4th.

[Belmont Community Path 25% Submission Plans](#)

[Nov 4th Public Meeting Agenda](#)

Posted in Design Documents, Design Progress, Project Update, Public Meeting Tagged 25% Design Submission Plans, Public Meeting [Leave a Comment](#)

## How To Reach Us

- Visit the project website at:  
<https://belmontcommunitypath.com>
- Submit email comments to:  
[MassDOTProjectManagement@dot.state.ma.us](mailto:MassDOTProjectManagement@dot.state.ma.us)  
Attention: Project Management, Project File No. 609204
- For project information visit the MassDOT Upcoming Events for Highway Division web site at  
<http://www.mass.gov/orgs/highway-division/events> or used the QR Code:
- Submit written comments to:  
Carrie Lavallee, P.E., Chief Engineer  
MassDOT  
10 Park Plaza  
Boston, MA 02116  
Attention: MassDOT Highway Division, PROJECT FILE NO. 609204





**Questions and  
comments**



# Thank You

*Belmont Community Path – Phase 1  
Design Public Hearing*

Beech Street Center | March 07, 2024 | 7:00 PM

Project File No. 609204

